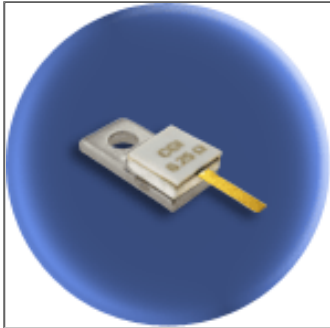


# Component General, Inc.

P/N: CBT-20-8

## Stripline Base Mounted Terminations



### Mechanical Specifications

**Covers:**

Alumina Ceramic.

**Substrate:**

Beryllium Oxide Ceramic.

**Contact:**

Beryllium Copper, Gold Plated per MIL-G-45204.  
Length: 0.250" Min., Width: 0.060",  
Thickness 0.004" ± 0.002".

**Heat Sink:**

Copper, Nickel Plated per QQ-N-290.

**Tolerance:**

± 0.010" unless specified.

### Electrical Specifications

**Resistance Value:**

10 - 1000 Ω or as required. Other values available upon request.

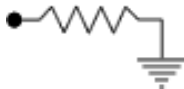
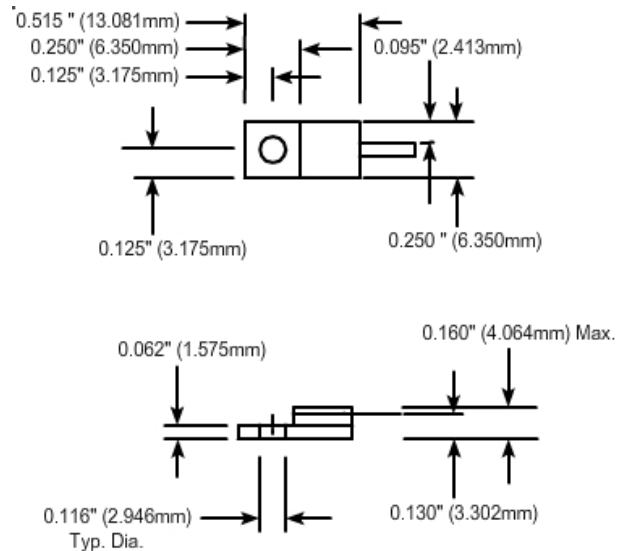
**Frequency Range: VSWR (Max.):**

DC - 4.0 GHz 1.25:1

**Standard Resistance Tolerance:**

± 5% Other tolerances available upon request.

### Part Dimensions



Note: The use of thermal mounting compound is recommended.